

CCAC Wireless Access – Windows 8/8.1

You may follow these instructions to configure CCACwireless on a Windows 8/8.1 device.

Check for saved networks CCACwireless and guest@ccac.

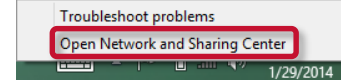
Removing old CCACwireless and guest@ccac configurations will ensure a clean start configuring the network from scratch. Windows 8 removed the graphical interface for managing wireless networks.

1. From Start Menu, search for, then open **Command Prompt**
 - a. Run the following commands to remove any saved configurations of **CCACwireless** and **guest@ccac**:
 - i. `netsh wlan delete profile name="CCACwireless"`
 - ii. `netsh wlan delete profile name="guest@ccac"`
2. Close **Command Prompt**

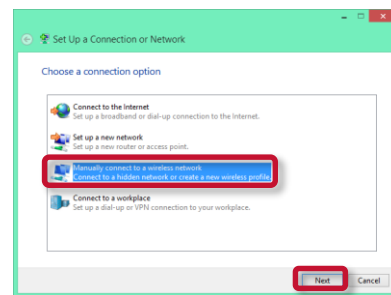
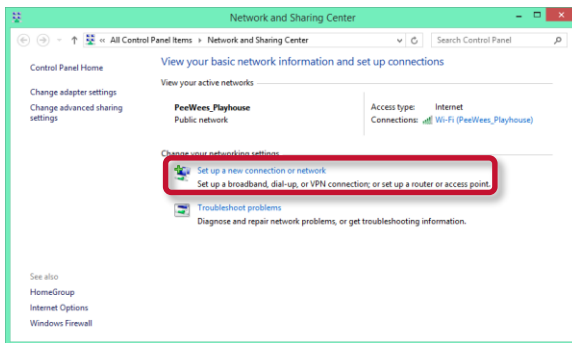
Manually Configure CCACwireless

This part of the configuration is similar to the configurations for Windows 7.

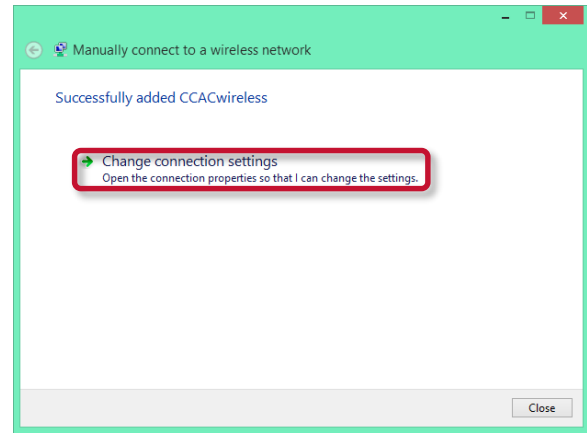
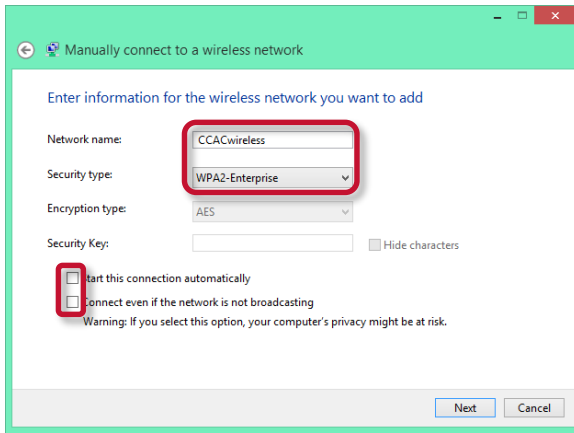
1. Open Network and Sharing Center
 - a. From Desktop Mode, right-click Wi-Fi in Taskbar near clock
2. Click **Set up a new connection or network**. Choose **Manually connect to a wireless network**, then click **Next**.



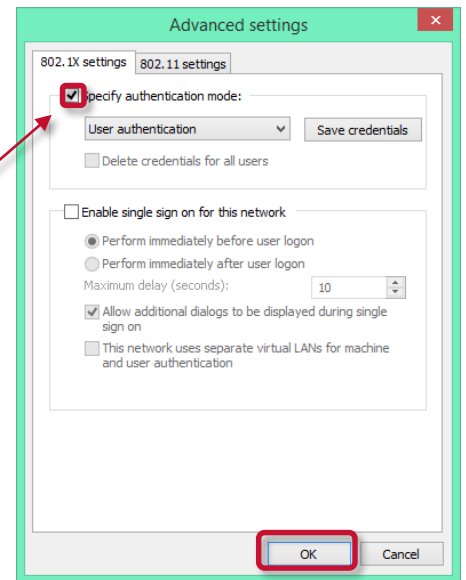
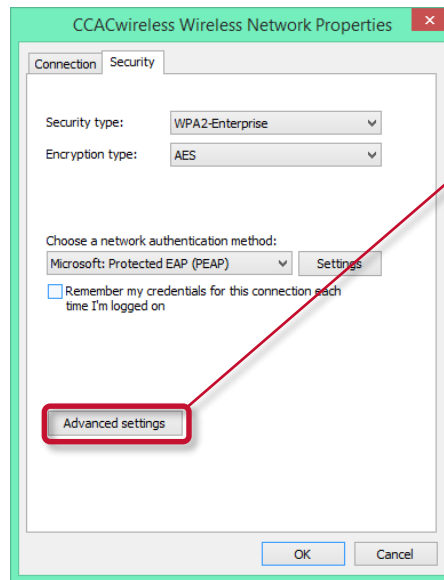
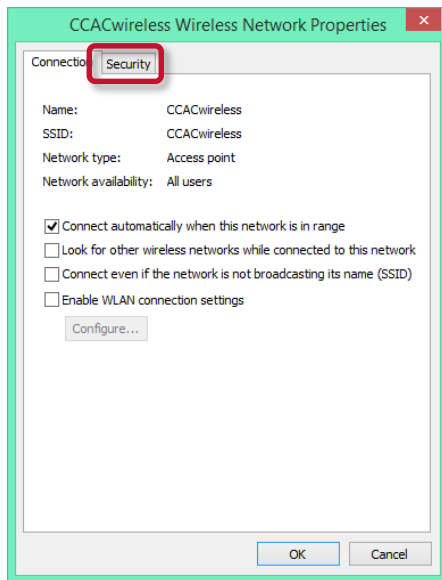
- b. From Start Menu, search for, then open Network and Sharing Center under Settings Category



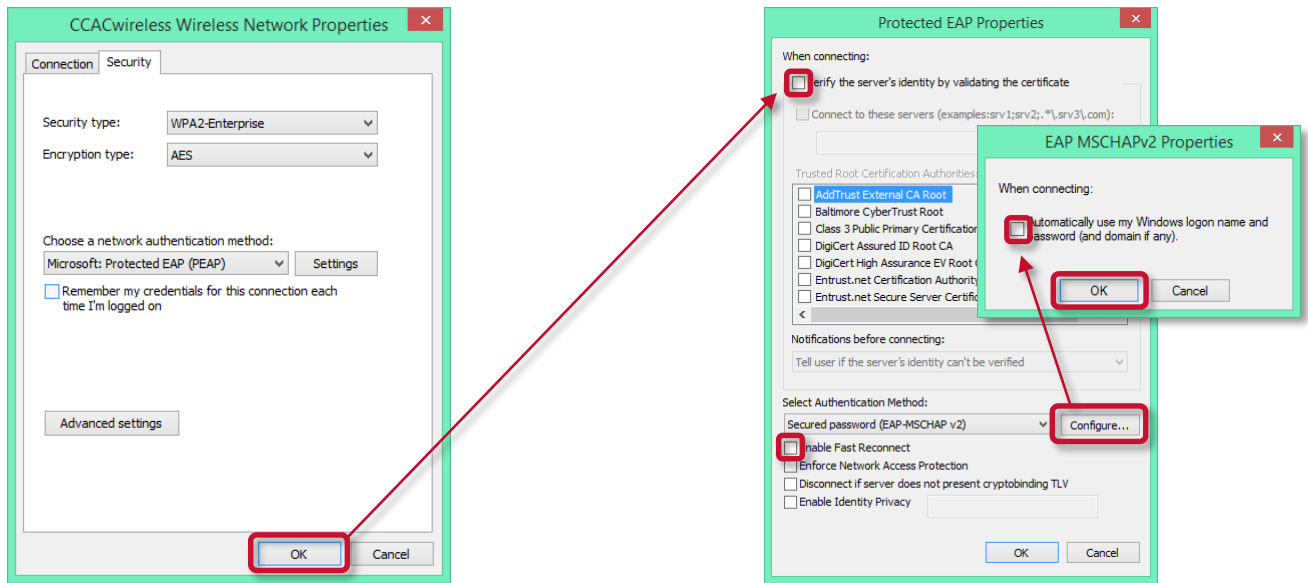
3. In this window, Enter **CCACwireless** for the “Network Name.” Choose **WPA2-Enterprise** for the “Security Type.” **Uncheck** both boxes under “Security Key.” Click **Next**. Next, click **Change connection settings**.



4. On the Wireless Network Properties window, click the **Security** tab. Click **Advanced settings**. In the Advanced Settings window, check the box for **Specify authentication mode**. Select **User authentication** from the drop-down menu. Click **OK**.



5. From the Wireless Network Properties window, **check** the box if you would like to “Remember my credentials for this connection each time I’m logged on.” If **unchecked**, you will need to enter your user name and password each time you connect. Click **Settings**. **Uncheck** the box for “Verify server certificate.” Uncheck box for “Enable Fast Reconnect.” Click **Configure**. **Uncheck** the box for “Automatically use my Windows login name and password (and domain if any).” Click **OK** and close all manual wireless configuration windows.



Connect to CCACwireless

In the final step, connect to CCACwireless and enter your NetID user name and password.

1. Open available networks

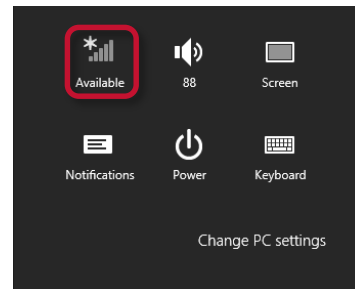
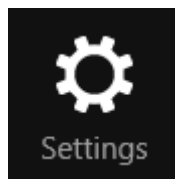
- a. From Desktop Mode, click Wi-Fi in taskbar near clock

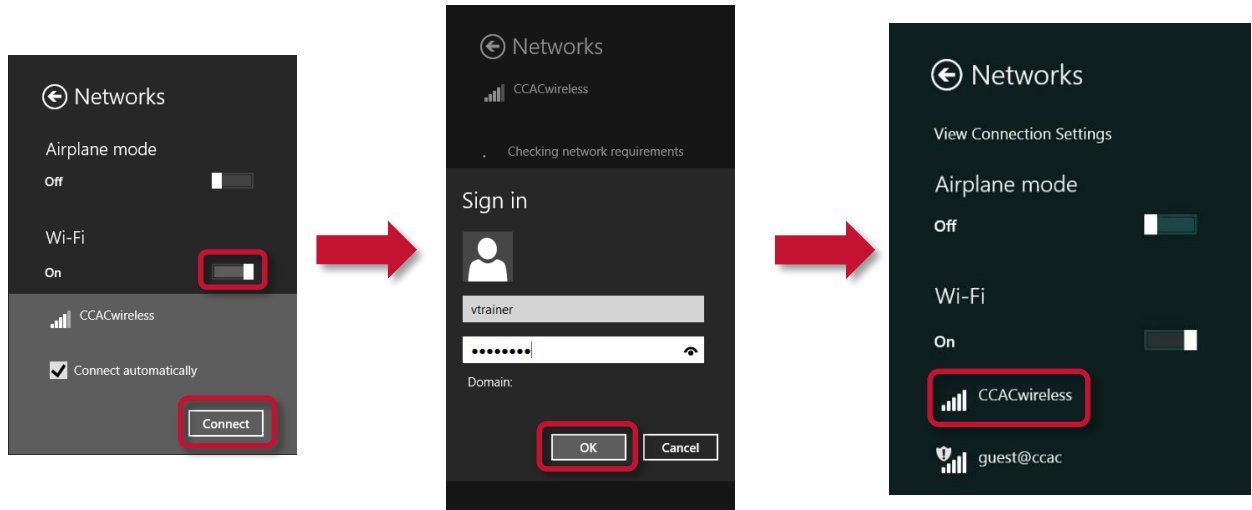


- b. From anywhere, activate “charms bar” on right side of screen by...

- i. **Mouse:** Move cursor along right side of screen
- ii. **Touch Screen:** Swipe *in* from *right side* of screen starting from the bezel

2. Click **Settings**. Then, click the **Wi-Fi** signal indicator. It will say “Available” if not connected. Make sure Wi-Fi is switched **On**. Click **CCACwireless**, choose whether to “Connect automatically,” then click **Connect**. Enter you NetID **user name** and **password**, then click **OK**. Be patient as the connection may take a moment to complete.





About CCACwireless:

ITS strongly recommends that CCAC community members (students, faculty and staff) use this secure level of access. **CCACwireless** uses strong encryption that serves to protect your information from unauthorized interception and viewing.